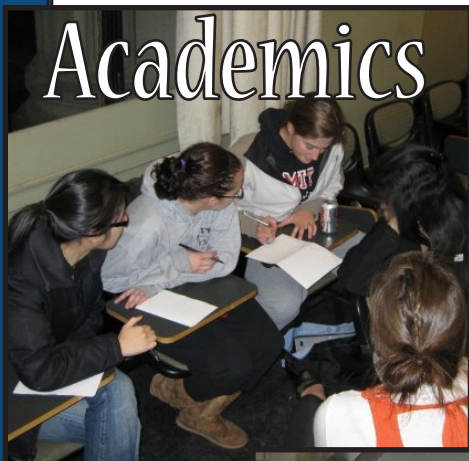


BE MORE

BE GREEK

Academics



Leadership



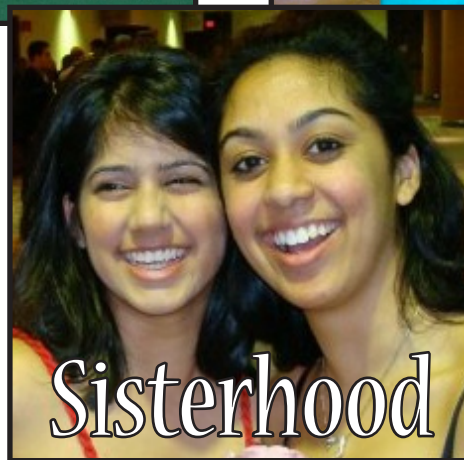
Fun



Service



Sisterhood



MIT Panhel Sorority Recruitment

Welcome to MIT Panhellenic Recruitment 2009!

Come as you are. Sororities at MIT are about finding a place where you feel comfortable as an individual as well as feel supported by your community. Over the next five days, you will meet diverse and inspiring women from each of our six current sororities: Alpha Chi Omega, Alpha Epsilon Phi, Alpha Phi, Kappa Alpha Theta, Pi Beta Phi, and Sigma Kappa. Each sorority on campus has a distinct personality, yet all were founded on similar values and as a support system for women at MIT.

In order to get the most out of the recruitment experience, we encourage you to approach the process with enthusiasm and an open mind. It's okay to look. In fact, as the parties go by, you may find yourself facing some tough decisions. However, the Panhellenic Recruitment Counselors (PRCs) have committed themselves to helping you make the best decisions for you during recruitment.

This booklet is designed to answer the most basic and important questions about sororities at MIT, but you are bound to learn so much more in each of the rooms you will be visiting over the next few days. Please take the time to look through everything and ask your PRC any questions you have regarding the recruitment process. Have a lovely week and let us know if there is anything we can do for you!

Questions?



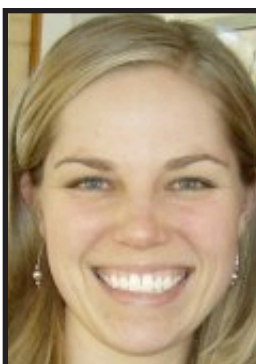
Marta Milan
VP Recruitment
mmilan@mit.edu
Marta is in charge of all the logistics of recruitment



Minh Huynh-Le
President
minh@mit.edu
Minh oversees the events of the Panhellenic Association



Jenn Toyzer
VP Recruitment
Programming
jennet@mit.edu
Jenn is the head Panhellenic Recruitment Counselor



Lauren Wojtkun
Assistant Director of FSILGs
laurenw@mit.edu
Lauren is the Panhel advisor

Please feel free to ask any of the members of the Panhellenic Recruitment Exec if you have questions.

Rules and Rights of a Potential New Member

The sororities, through Panhel, have created specific rules and institutions to make recruitment a fair, equal, and supportive experience for everyone involved.

As a potential new member, you have the responsibility of respecting, as we do, the following rules:

- if you know of a PRC's sorority affiliation, respect her decision to not reveal it during recruitment. She has made a sacrifice for others through disaffiliation.
- refrain from discussing recruitment or specific sororities outside of the recruitment events. Joining a sorority is a deeply personal decision, and influences based on unfounded rumors can have a detrimental effect on your recruitment experience. Additionally, we request that you refrain from discussing sororities with men or while under the influence of substances, since this is against the informed and up front recruitment process we value.

Likewise, you also have rights as a PNM. The right to...

- be treated respectfully as an individual
- be fully informed about the Formal Recruitment process
- ask questions and receive true and objective answers from sorority members and the PRCs
- have inviolable confidentiality when sharing information with a PRC
- make informed choices without undue pressure from others
- have a positive, safe, and enriching recruitment and sorority experience

ΑΧΩ

ΑΕΦ

ΑΦ

Panhellenic Creed

We, as Undergraduate members of Women's Fraternities, stand for good scholarship, for guarding of good health, for maintenance of fine standards, and for serving, to the best of our ability, our college community. Cooperation for furthering fraternity life, in harmony with its best possibilities, is the ideal that shall guide our fraternity activities.

We, as Fraternity Women, stand for service through the development of character inspired by the close contact and deep friendship of individual fraternity and Panhellenic life. The opportunity for wide and wise human service, through mutual respect and helpfulness, is the tenet by which we strive to live.

ΚΑΘ

ΠΒΦ

ΣΚ

What is Panhel?

MIT Panhellenic Association, commonly referred to as Panhel, has a mission to “foster personal development, empower, and enhance the lives of women in the MIT community in order to embrace our role as the largest women’s organization on campus.” As a governing body, Panhel is a coalition of sorority leaders that unites the community to support women’s initiatives by providing various programming (academic, community service, social, etc.) for sorority members, coordinating outreach to all women on campus, and setting goals and guidelines for formal recruitment.



Veronica Wilson
VP Finance



Sarika Chandiramani
VP Programming



Jennifer Toyzer
Head PRC



Minh Huynh-Le
President



Marta Lynne Milan
VP Recruitment



Debbie Yee
Executive VP



Arti Virkud
VP Public Relations

Panhel Exec



Stephanie Leger



Gina Policelli



Alex Wright

*PRCs
2009*



Vicki Lee



Emily Jean Onufer



Carrie DeBoer



Laura Aust



Natasha Bosanac



Megan Kercher



Kamyin Cheng



Amanda Fried



Elli Pula



Julia Roberts



Samantha Marquart



Katie Smyth



Katie Puckett



Ritu Tandon



Judy Ho



Sarah Vega



Shanette Go



Destie Provenzano



Danielle DeLatte

What is a PRC?

A PRC, or Pi Rho Chi (IIPX), is a Panhellenic Recruitment Counselor. PRCs act as counselors for all women participating in Panhellenic Recruitment. Each PRC is an unbiased, disaffiliated sorority member (for the period of formal recruitment) who has dedicated herself to helping you through recruitment. She is ready to answer any questions you have about recruitment or sororities in general. During recruitment, you will be assigned specific PRCs but are welcome to approach any PRC throughout the process. Your PRC is an important resource during the recruitment period: she will provide you with schedules before each round of recruitment, she will help you work through decisions about which sorority is right for you, and she is your main point of contact with Panhel. You will not know which sorority your PRC is a part of, and this is intentional - we want you to feel comfortable talking to your PRC about each sorority, without interference from knowledge of her affiliation. You should feel at ease with your PRC, and you should be able to share your honest feelings about each chapter. If for any reason you are not comfortable with the PRC you’ve been assigned, just let any member of Recruitment Exec (Jenn, Marta or Minh) know and your thoughts will be kept in confidence.

Know Your PRC

Name

Phone Number

E-mail Address



Before Recruitment

Talk to you parents about recruitment

Joining a sorority is an important commitment that your parents may have questions about. If your parents would like to know more information about this process or about MIT sororities, let your PRC know as soon as possible. She will be able to help you and your parents make informed decisions about membership.

Let your PRC know about any scheduling issues you may have

Since recruitment is only four days long, it is important to attend every recruitment event to meet as many sisters as possible and make the most informed decision. If you have a commitment that will prevent you from attending parts of recruitment, please tell your PRC.

Think about the important questions...

What you hope to get out of recruitment, your values, top characteristics you value in yourself and others as well as concerns and questions you might have. All of these questions will help you during your conversations with the different sororities to determine if these values and characteristics are reflected in each of the sororities you visit. Knowing what you value in yourself and look for your friends might help you through some tough decisions during recruitment.

Ask Yourself

What are your top three values?

What are the top three characteristics you value in friends?

What concerns do you have about your future at MIT / after MIT?

What are the top three reasons you want to join a sorority / top three reasons not to join?

During Recruitment

Talk to your Recruitment Counselor

Both before and during recruitment your PRC is there to help you during all of your decisions. She was in your shoes not too long ago and has separated herself from her chapter to give you unbiased information. Feel free to discuss any problems with her or ask her any questions.

Arrive to all events and meetings at least 10 minutes early!

In order to give everyone the most time at each sorority event, it is important for us to start on time every day. If you are late without an approved excuse, you may miss out on important rounds and decrease your chances of getting a bid from your top choice. Take note of your meeting time with your PRC as well.

How to Handle Recruitment

We're all really excited to have you doing Recruitment this year. We know this process can be confusing - we've all been there. Hopefully this guide will explain any questions you might have, but don't be afraid to contact any of your PRCs with any questions you might have.

Saturday, September 5

Go Greek Griller & Welcome Day

Student Center

1:30pm-7:30pm

Dress Code: Casual

You'll get to visit all of the sororities and have short conversations with a lot of sisters. You can ask as many questions as you want to get a feel for each sorority. We want to give you a taste of the amazing Greek women at MIT!



Sunday, September 6

Philanthropy Day

Chapter Houses

(Meet in Student Center First)

10:30am-7:30pm

Dress Code: Casual

You will learn about each sorority's philanthropy, make a small craft to support their cause, and visit the four sorority houses! During the year, each sorority holds fun events to support their philanthropy and they'll give you the details. A lot more time is spent talking with sorority women, and you will learn information about each sorority's events, values, traditions, etc. At the end of this day, you will rank the four sororities you feel most comfortable at.

Monday, September 7

Sisterhood Day

Student Center

12:00pm-4pm

Dress Code: Casual

You will visit up to four sororities, and learn how each honors their sisters and forges the bonds of sisterhood. You'll learn about everything from retreats to their new member class bonding to big/little sister pairs. It's a great way to see what really makes sororities at MIT unique compared to other organizations on campus. At the end of this day, you will rank the two sororities you fit with the best.



Tuesday, September 8

Preference Day

Student Center

10:30am-2:15pm

Dress Code: Semi-formal dress

You will spend an hour and fifteen minutes with a sorority or two by which you have been mutually selected. You can ask about all remaining questions and concerns to help you make your final decision. Until Bid Day, you will be restricted from speaking to girls from any sorority once you leave the pref room – so talk to them while you can!

Wednesday, September 9

Bid Night

Student Center

7:30pm-10pm

Dress Code: Casual

You finally get to join your sorority and meet your new member class! Right after you learn which sorority gave you a bid, the PRCs reveal their sorority affiliation – we know you've been wondering! Then you spend the evening hanging out with and getting to know women in your new sorority.



You may be wondering . . .

Why can't I just join a sorority right off the bat?

Some of you may be going through recruitment with no idea what sororities are, while others may have explored several during your time at CPW. Regardless, we can assure you that you can't fully appreciate each sorority yet. Multiple days of recruitment ensure that you get to know the sororities and the sororities get to know you. That's why we've constructed several days for you to meet a lot of sorority women and learn why being in each sorority rocks!

What is a Recruitment Party?

During each day of recruitment, you will visit multiple sororities, one at a time. Each time you meet the women of a different sorority, the round is called a "party."

Why is this so long?

Recruitment can be a little tiring and difficult, especially the first day. We promise that each subsequent day brings additional fun and excitement, and the conversations become more and more enlightening. The more time you spend with each sorority, the better you get to know each one and figure out which one is best fit for you. For some, the decision-making can become more difficult, but that's why you have PRCs to help you!

Why do I have to be quiet during the down time?

There are several reasons for this. First of all, it helps keep us moving quickly so you have as much time as possible to see what each sorority is all about. Secondly, it's important that you use this time to reflect about what YOU want to do. Although you may want to hear other people's opinions, you might get misled. Trust us, it's best to trust your instincts and impressions. After all, this is your decision - you should embrace it!

Why won't anyone tell me the stereotypes of each of the sororities?

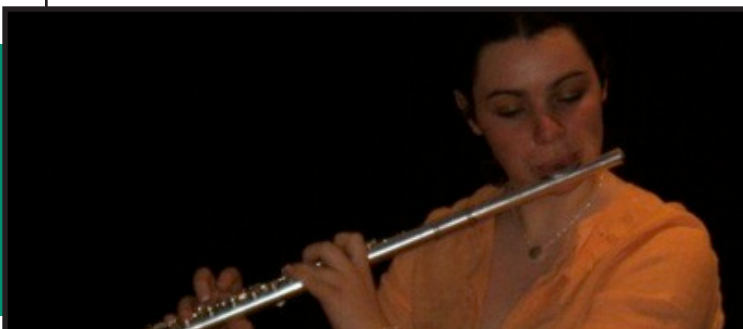
No sorority has a stereotype that correctly identifies its sisters – seriously! Each sorority has an extremely diverse group of women. As hard as it is, you really have to meet each sorority yourself to find where you fit in the best. Your PRC can give you advice on figuring this out.

Why do we need to stand alphabetically?

Again, we really want to make sure that each of you will get the most amount of time with each sorority. This allows us to make sure you're all there and inform the sororities. It's all a part of making recruitment run smoothly and maximizing your enjoyment each day!

Why can't we talk to any sorority women between pref and bid day?

This rule of "strict silence" is necessary to keep things smooth - imagine a girl from sorority X has a long conversation with you, so you think you'll get a bid from that sorority, but in the end you get a bid from sorority Y - that could be awkward. Also, the silence builds up the excitement for bid day when you finally get to know which sorority you're a part of!



Terms to Know

Active - a fully initiated member of a sorority

Alumna - an active member of a sorority who has graduated

Bid - an official invitation to a prospective member to join a sorority

Chapter - the name given to a collegiate branch of a sorority

Disaffiliation – temporary concealment of affiliation, used by Pi Rho Chi's so they may be an unbiased resource for the PNMs

Initiation - ritualistic ceremony by which new members receive full membership

Legacy - a person whose parent, grandparent, or sister is Greek

Nationals - a common/slang term for a fraternity or sorority Headquarters or Headquarter Office which provides support, training, employs staff members and provides resources for local chapters of nationally affiliated fraternities and sororities

New Member - a student who has accepted the bid of a fraternity or sorority and who enters a period of training to learn history, traditions, and goals of the group

Recruitment - a process of mutual selection whereby each PNM and each sorority is able to make an educated decision by getting to know one another

Ritual - the traditional, sacred ceremonies of a chapter, which are usually secret

Sister - a term used with a women's fraternity when referring to other initiated members

Sorority - a group of women banded together for social and educational purposes

Philanthropy - a charitable cause for which a chapter raises money or performs service

Potential New Member (PNM) - a student who is registered for recruitment

Sorority Myths

"I'll end up partying so much that I won't have time to study."

All of the sororities at MIT have higher GPAs than the on-campus student population and have **academic resources for the benefit of their members**. Usually, study group sessions with older members are organized to help the younger members. Most sororities also keep old class notes, tests, and problem sets as extra resources.

"Sororities members pay for friends."

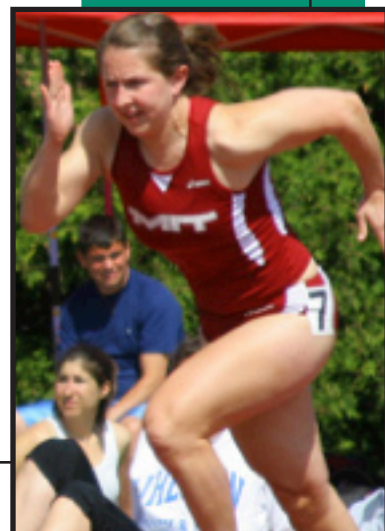
Sororities are set apart from other organizations by their **values**. The different sets of values usually include social responsibility to its members, but also encourage high academic standards, community service, and character and leadership development.

"I won't have time to join other groups or have time for my non-affiliated friends."

Sorority women can **do as much or as little as they wish**, with both their sorority and other organizations. Many members hold positions in their sorority house, Panhellenic Council, varsity sports teams, service clubs, student government, professional organizations, dormitories, and UROPs.

"Only freshmen girls join sororities."

Each, fall we have freshmen, sophomores, juniors, and even seniors join sororities - we welcome women of all ages!



FAQs about Sororities

What are sororities?

Sororities are undergraduate social organizations that encourage **high academic standards, community service, and character and leadership development**. With over 500 women are in sororities at MIT, Panhel is the largest women's organization on campus. Sororities are Greek letter organizations that offer lifelong membership, and provide sisterhood networks throughout the country. There are 26 national sororities, six of which are at MIT: **Alpha Chi Omega, Alpha Epsilon Phi, Alpha Phi, Kappa Alpha Theta, Pi Beta Phi, and Sigma Kappa**.

What type of activities do sororities participate in on campus?

Academic: Sororities provide programming about choosing majors, classes, and professors. They also have faculty dinners in which faculty guests are invited to have dinner with sisters in an informal setting. Sisters also participate in tutoring services and undergraduate research. **The sorority GPA average is higher than the general MIT average.** Sisters must keep a certain GPA to be allowed to stay in the sorority; academics are very important.

Community Service: In addition to providing opportunities for sisters to go out into the community and volunteer, each of the sororities also hosts a large philanthropy event every year. Some of these events raise thousands of dollars to benefit various charities.

Health and Wellness: It's hard to stay healthy at MIT! Because of this, each of the sororities provides some basic programming for women. The Panhellenic Association also sponsors healthy eating study breaks and various other sessions about staying healthy.

Social: Each sorority has a semiformal in the fall, a formal in the spring, and mixers with fraternities throughout the year. Sororities also sponsor social events that are open to the entire campus community.

How much does it cost to be in a sorority?

Costs vary from sorority to sorority, and term to term. **Each sorority does everything possible to cater to specific financial needs.** For specific costs, please e-mail sororities@mit.edu.

If I join a sorority, do I have to move into the house?

Out of the six sororities on campus, three have houses off campus and one is housed on campus. The number of women who live in these facilities ranges from 20-60, and each of the sororities has different rules about moving into the house.

Is there hazing?

No! Hazing is against MIT policy and against the rules of every national sorority. And although it sounds unbelievable, the sororities actually follow this rule at MIT. **You will never be asked to do anything that you are not comfortable doing.** We believe that there are more constructive ways to build spirit and character.

Do sororities have alcoholic parties or alcohol in their houses?

Nope! All sorority chapter and headquarter policies prohibit sororities from serving alcohol, and MIT sororities follow that rule very strictly.

Do sororities take up a lot of time?

A sorority takes as much or as little time you want to invest in your experience. Ask each chapter if they have mandatory events and how much time they take. In terms of conflicting events, sorority involvement enhances academics and supports your extracurricular experiences rather than draws your time away.

FAQs about Recruitment

How does recruitment work?

Recruitment is a mutual selection process designed so that you get the chance to see all of the sororities at least once and meet many upperclassmen women. It starts in the fall after Orientation and ends on the first day of classes (September 5th - 9th, 2009). Sororities decide who they want to invite back after each day, and you will decide who you want to go back to. This continues until the final event, after which you rank your final two sororities according to who you feel you fit in with best. Soon after, you will receive a bid to join a sorority!

What's different about Alpha Epsilon Phi's involvement in this recruitment?

Alpha Epsilon Phi is a traditionally smaller sorority that embraces the Jewish heritage. This year, the sisters of AEPi will be present during the first day of sorority recruitment so that you can meet some of the sisters and get an idea of what their sorority is all about. Once formal recruitment ends, Alpha Epsilon Phi will begin informal recruitment.

I hear sororities are selective; will I get a membership invitation?

This is a mutual selection process. We make every attempt to ensure everyone eligible receives a membership invitation. If you maximize your options during recruitment, you receive the highest placement priority.

What if I have conflicts with some of the times of recruitment?

Let your PRC know immediately. Some necessary absences, mostly due to sports, have already been worked out, but we must have advance notice.

What if I don't think I want to join a sorority?

By going through recruitment, you aren't committing yourself to joining a sorority. If you decide to not join in the end, then you will still be able to walk away with more friends and knowledge about the Greek community and the lives of other women here at MIT.

Why would I want to join?

Sororities are a diverse group of women all helping each other through the rigors here at MIT. They provide means of academic and leadership development, philanthropic activities and also provide social programs. Each sister has her own reason for joining, and if you decide to pledge you will have your own as well.

What if I have more questions?

If you have more questions, please e-mail sororities@mit.edu or call 617-869-7996.



ALPHA CHI OMEGA

HISTORY

Alpha Chi Omega was founded in 1885 at DePauw University in Indiana by seven young women from the School of Music. In 1986, 38 women established the Theta Omicron chapter at MIT. Now, in 2009, we have 122 active members. We enjoy the experiences of college in the company of our sisters, bonded by our motto "Together Let Us Seek The Heights."



LEADERSHIP

Every sister has the chance to hold a leadership position in Alpha Chi Omega, including opportunities to plan an event, care for a one hundred-year old mansion, manage our website, or lead our chapter as a whole. Whether you serve on our executive board or in a non-executive position such as social chair or community service chair, the opportunities in our chapter will develop your skills as a leader and help you expand your horizons during your time here at MIT. There are plenty of upperclassmen, as well members of our local alumnae chapter, to look up to and help prepare you for any challenge. Our leadership also extends beyond the chapter to campus and off-campus activities. You can find Alpha Chi's starting their own organizations, like LTI, or leading the EMTs, Dance Troupe, Panhel, SWE, varsity sports, and many other campus and community activities. Alpha Chi Omega is continually recognized by the FSILG community for excellent spirit, leadership, and campus participation.

PHILANTHROPY

Nationally, Alpha Chi Omega supports domestic violence awareness. Our sisters take great pride in the chapter's many philanthropic activities, which help raise money for the local Boston Area Rape Crisis Center. Throughout the year, we have events ranging from our fall Domestic Violence Awareness Week to our popular campus-wide Lip Sync performance event in the spring. Additionally, throughout the year, sisters actively partake in other outreach programs and philanthropic activities in the area, such as the annual Alzheimer's Memory Walk. We are proud to raise thousands of dollars to support philanthropy every year.



SISTERHOOD

Being an AXO means having at least 100 young women you can count on. Whether they are cheering for you at a game, waiting for you with flowers after your concert, lending you a dress for a formal, comforting you when you are upset, or just hanging out at the student center couches for lunch, they will always be there to support you. As an Alpha Chi, you make lasting friendships with amazing women whom you might not have met otherwise. Alpha Chi Omega brings together a diverse group of unique women to share the common bond of sisterhood. Together we grow as individuals, learn about others, and tackle the stress of MIT with support from our sisters.



ACADEMICS

Alpha Chi Omega is committed to helping its members succeed in classes and beyond. As a member, you will have access to our extensive coursework collections, textbook exchanges, course email lists, and career workshops, as well as the comfy study room in our house. Your greatest resource, however, will be contact with other sisters who share advice on everything from picking classes to choosing a major to acing an interview. There is also a great network of AXO alums who are happy to help you find internships and build your career. Because of our strong academic support, our chapter consistently ranks in the top third of FSILG GPAs, often with the highest sorority GPA!



HOUSING

In the fall of 1994, we moved into our beautiful mansion in Kenmore Square. Our house offers twenty-five of our sisters an amazing home, and provides the rest of the chapter with a great place to come relax. Sisters come to the house to watch a movie on our big screen TV, catch up on their favorite show with TiVo, eat a delicious dinner prepared by our chef, David, or study in the chapter room, which includes three Athena computers and a color printer. Additionally, our location in the Back Bay allows us easy access to the shopping, restaurants, and culture of Boston.

*feeling
comfortable being
yourself around
your sisters*

ALPHA EPSILON PHI

HISTORY

Alpha Epsilon Phi was founded in 1909 at Barnard College by seven Jewish women who could not join any other sorority because of their Jewish heritage. Today, AEPH's goal is to promote long-lasting friendships and dedication to the sorority through our national Jewish Identity. We have sisters from a range of religious backgrounds who are all happy in AEPH; our ritual and traditions, which are rooted in Jewish culture and values, bring us together. We are proud of our history and identity, and we are seeking women who will embrace it.

Everyone has the opportunity to become a leader, share her heritage, and develop friendships with every sister.



LEADERSHIP

Every sister in AEPH has the opportunity to have a leadership position that she finds exciting. Many sisters serve on our Executive Board during their four years at MIT, and sisters can hold chairships in anything, from sisterhood, to community service, or to IM sports. Through these opportunities, our sisters can meet with campus leaders and AEPH alumni, gain valuable teamwork experience, and develop closer relationships with each other. The leadership skills we develop in AEPH also help us outside our chapter; many AEPHs serve as TAs, Hillel leaders, club presidents, and the list goes on!

PHILANTHROPY

Our national philanthropies are The Elizabeth Glazer Pediatric AIDS Foundation, an organization supporting research and health-care for children with AIDS, and Sharsheret, an organization that provides a support network for Jewish women with breast cancer. Both of our philanthropies were founded by AEPHs! Our chapter hosts multiple philanthropy events each year— Spaghetti Dinner in the fall; an intramural ice hockey tournament, Phi Cup, in the spring; and multiple bake sales. In addition, we have walked together in Project Bread's Walk for Hunger, beaded bracelets for sick children, and served lunch at Rosie's Place, a women's shelter in Boston. Some sisters also volunteer together in other MIT community service groups. We are very enthusiastic about helping our national philanthropies and our local community!



ACADEMICS

In AEPHi, we know that by supporting one another and challenging ourselves to succeed, we can accomplish and surpass our goals. During fall 2008, our chapter attained the highest FSILG GPA on campus! The members of our chapter come from an incredibly wide range of majors including mathematics, civil engineering, brain and cognitive sciences, and chemical engineering. In addition, our sisters have a long tradition of helping each other to succeed; we have always been able to look to one another for help on a problem set, advice on what classes to take, and insight on career and summer internship choices, as well as the opportunity to celebrate successes and work through setbacks together. Many sisters have weekly study sessions with each other. Furthermore, our Second Avenues program allows sisters to learn new things that they cannot learn in the MIT classroom. Past Second Avenues programs included discussing recycling and other methods of protecting the environment and learning how to take advantage of the resources that the MIT libraries offer. Additionally, sisters have gone together to hear speakers invited by Panhel and other groups. AEPHIs are always excited to learn together!



SISTERHOOD

Every sister in AEPHi has a close relationship with all of her sisters. Sisters feel comfortable talking to each other about everything, from religion, to problem sets, to movies. Sisters also have a deep appreciation for each other, which we exemplify in the "phi praises" that we write to each other at the end of every chapter meeting. Our bonds of sisterhood are also strengthened by our activities throughout each semester. We have off-campus sisterhood retreats every semester to places such as the DeCordova Museum and Sculpture Park or the Boston Rock Gym. Our formals are famous for being non-traditional, breaking away from the typical dinner and dancing date event. Past formals have included a limousine scavenger hunt, bowling in formal-wear, going to a comedy show, and swing dancing lessons. Blind date events, weekly baking and game nights in sisters' dorms, alumni events, and our annual AE-Holiday celebration in December all also contribute to and enhance our sisterhood. We also go as a group to sisters' musical and theater performances. In AEPHi, we work together to plan creative events, support each other in trying new activities, and always have fun.



HOUSING

Sisters in Alpha Epsilon Phi love living on campus. We regularly have baking nights, game nights, and other sisterhood events in dorms. We enjoy getting involved in both our sorority and our dorm communities, and sisters frequently take on leadership roles where they live. We don't have a house, and prefer it that way.

ALPHA PHI

HISTORY

The first Alpha Phi chapter was established at Syracuse in 1872. Since then, APhi has expanded to chapters across the nation, including becoming the first sorority at MIT in 1984. Continuing this tradition of firsts, Alpha Phi was the first sorority at MIT to own a house. We moved into two beautiful brownstones in Kenmore Square in 1991 and have found that living together enables us to have uniquely close friendships and to cultivate within each other the highest ideals of womanhood.

LEADERSHIP

Going Greek provides an amazing array of leadership opportunities for every sister. As an entirely self-sufficient organization, Alpha Phi must care for its sisters, its house, and the chapter as a whole. Many sisters take positions within the chapter, ranging from Social Chairs to President. In this capacity, sisters learn organization, delegation, budgeting, and a whole host of skills that aid the transition from college to the "real world." Alpha Phi also supports leadership on campus, including positions on Class Council, Orientation Coordinators and Leaders, and captains of athletic teams.



PHILANTHROPY

Alpha Phi was the first sorority to establish its own foundation, Cardiac Care. Money that every chapter raises each year funds cardiac disease research and education. The Zeta Phi chapter at MIT raises its contribution through a variety of events – annual candygram booths, numerous bake sales and chocolate buffets, and our two yearly large-scale campus wide events, Homecoming and King of Hearts.

SISTERHOOD

The Alpha Phi chapter was established by our ten founding members to provide unity, friendship, and support at a male-dominated university, and the Zeta Phi chapter at MIT maintains this purpose today. Our sisters are friends for a lifetime – we support each other now, comforting after bad days and celebrating after good ones, and we are still involved years down the road, at weddings and anniversaries. We live not just with each other, but for each other.



I believe in the friendships formed in the spring time of my youth.

HOUSING

Alpha Phi's house is two interconnected brownstones in Kenmore Square. We house sixty women and are the largest sorority living group at MIT. Because of the size of our house, every sister who wishes to live in the house can. Sisters live in singles, doubles, triples, and quads. Bathrooms are shared between 4 and 5 girls. We have an amazing chef who cooks dinner five nights a week, an open and fully stocked kitchen, a cool RA, and a house supervisor who fixes the little things around the house. Living in the house is an unforgettable experience and an integral part of being an Alpha Phi.

ACADEMICS

While we love to have fun, the sisters of Alpha Phi are devoted to success in their classes and future careers. We have sisters in almost every major, so there is always someone to help you on that tough problem set. Our sisters are frequently TAs and tutors for classes as well, and for even more help you can access our extensive bible collection or use our online academic wiki. We also counsel each other in searching for jobs or applying to grad school.



KAPPA ALPHA THETA

HISTORY

Kappa Alpha Theta, or "Theta," was founded at DePauw University in Indiana in 1870, making it the first Greek-letter fraternity for women. (The word "sorority" came about after Theta was founded.) Since then, Theta has expanded into a network of 125 chapters across both the United States and Canada. The Zeta Mu chapter of Kappa Alpha Theta was installed at MIT in February 1991, making us the fourth Panhellenic sorority on campus. Today, we have 120 active sisters with a diverse range of interests, 40 of whom live in our very own house on campus.

LEADERSHIP

We're proud to say that some of the most influential and well-respected student leaders at MIT are Thetas. We hold leadership positions ranging from the 2010, 2011 and 2012 Class Councils, UA representatives, and major roles in diverse student clubs, teams, and organizations, including the Track team, the Vagina Monologues, the Gymnastics team, the Field Hockey team, FPOPs, and SWE, among others. Thetas also start successful organizations of their own such as the Global Poverty Initiative and the Network of Sloan Undergraduate Women. You can also find us as one of your associate advisors, as a performer in Dance Troupe, and as a member of MITSO. We love to develop leadership skills in our members, so if that's what you're looking for, you won't be disappointed. Thetas are extremely active both within our chapter as well as externally on campus. We're everywhere and there's no denying it: wherever you go, you'll be sure to find a Theta!



PHILANTHROPY

Kappa Alpha Theta is strongly committed to community service. Our national philanthropy, Court Appointed Special Advocates (CASA), funds volunteers to represent abused and neglected children in court and to help them find a permanent home. Each year, we transform Walker Memorial into a glamorous and high-energy runway for KATwalk, a charity fashion show, and raise thousands of dollars for CASA. You'll also see us selling Care Packages around finals time, from which we consistently raise several hundred dollars to send to CASA while taking care of our local MIT community. In addition, our sisters participate in many smaller community service events with the other members of the Greek and MIT communities. The philanthropic spirit of our chapter not only brought us the James R. Killian Jr. Award for Community Involvement in 2006, but also encourages sisters to lead and to initiate service activities beyond the chapter; multiple sisters have received the highly competitive MIT Public Service Center Fellowships to serve communities around the world.



SISTERHOOD

In Theta, sisterhood is 120 girls ready to be there for you when you need us. It's about finishing a whole Vermonster with your new member class, watching Gossip Girl with your sisters every Monday night, partying – or just relaxing – to celebrate the end of a week filled with tests and problem sets, having a "family" to spend Thanksgiving with when you can't go home, or having someone to take you to Medical at 2am when you're sick. It's about the five-minute chats that turn into life-altering discussions. It's about the warmth and comfort you feel every time you put on your letters. It's about becoming a mature, confident woman on your own terms knowing that your sisters are always there for you. Our unwavering pride in Theta reflects the strength, resilience and unity in our sisterhood.



ACADEMICS

When it comes to studies, Theta provides an unparalleled support system. Our chapter consistently receives Panhellenic and FSILG awards for superior academic performance in the Greek community. With nearly all MIT majors represented in Theta, help is never far away. There's always someone who can loan you a course bible or a textbook, help with a problem set, tutor you, or give you advice on what to do with your life after MIT. If that doesn't work, try asking your Major Mentor, an upperclassman sister in your major, or make stronger connections with your professors at our Faculty Dinners. When it comes to searching for a job or internship, there's always an older and experienced sister ready to provide advice, interview tips and contacts. And when you get that dream job or get into that dream school, there's a group of girls ready to go out and celebrate with you.

*Individually
unique, together
complete, with true
love for each other.*

HOUSING

This past year, 40 sisters moved into our beautiful home between Baker and McCormick, making us the only sorority to be housed on campus. Just seconds away from the center of campus life, our house features 26 spacious singles and 7 roomy doubles, gorgeous views of the river, and ample hang-out space on all the floors. Sisters love to stop in on their way home to say hi, snack on some delicious baked goods some sisters have made, study in our peaceful library or even to play a quick (or very long) game of Rock Band. Breakfast and snacks are always available in the house for all sisters, from our well-stocked pantry to the kitchens located on every floor, and our housekeeper Luzia takes excellent care of us. Our house is a truly central part of our sisterhood and community, and we couldn't imagine a better place to call home during our time at MIT.



PI BETA PHI



HISTORY

Pi Beta Phi was founded on April 28, 1867 at Monmouth College in Monmouth, Illinois. The twelve founders had a vision to form the first national secret society for women at a time when only five state universities admitted females. These courageous women set the stage for a thriving organization that continues to enrich the lives of women during their collegiate years and beyond. Pi Beta Phi Fraternity for women distinguishes itself in the Greek world by leading the way as one of the first of seven founding members of the National Panhellenic Conference. It was also the first to form an alumnae department, the first to organize a national philanthropic project and the first to establish an Alumnae Advisory Committee (AAC) for each collegiate chapter. Ours is the first female organization to be modeled after men's fraternities, laying the ground for many sororities after us.

LEADERSHIP

Membership in our chapter involves not only the conventional methods of leadership, but also ones that provide an uncommon form of professional development. As a member of one of our chapter's first pledge classes, you can help mold the kind of sorority you want to be a part of at MIT. On a national level, Pi Phi has adopted a leadership model based on the principles of servant leadership, wherein everyone contributes to the good of the organization. This model guides our efforts as we strive to develop leadership potential in all of our members through a variety of chapter-based and Fraternity-sponsored programming and our member development program, Leading with Values. We encourage all members to develop their own potential and to lead through service on campus and the local communities.

PHILANTHROPY

As a chapter, we are dedicated to philanthropic and community service efforts that will remove the barrier of illiteracy. Pi Beta Phi's national commitment to literacy dates back almost 100 years to the founding of the Pi Beta Phi Settlement School in Tennessee. Almost a century later, our Fraternity continues to be a vehicle for serving others in the field of literacy. Over the course of the year, our chapter participates in several philanthropy events to benefit First Book®, a literacy organization that places new books into the hands of children in need. This year will be an exciting year for our chapter as we will host our first First Book Speed Read™, which will raise funds for the awareness of literacy. We also have a Fraternity Day of Service held to commemorate Dr. Seuss' birthday and sell Pi Beta Bunny Baskets in the spring to raise money to benefit First Book®. This year, we will also be implementing our Champions are Readers® (CAR) Program, which brings chapter members into local classrooms to mentor children and promote family literacy.

*I found the caring,
charismatic, crazy
friends I had been
looking for.*



SISTERHOOD

Being a part of a sorority means more than wearing Greek letters. Joining a sorority means gaining sisters and lifelong friendship. Our chapter is committed to fostering lifelong friendships and the bond of sisterhood. For our chapter, sisterhood means watching movies, going apple picking on a fall day or just grabbing lunch together during a busy week. Sisterhood also means always having a comforting shoulder ready to support you in tough times and girls ready to share a laugh in the good. More than a sorority, we are a family there to support you through college and beyond.

ACADEMICS

We believe excellence in academics should be important to all our members. Let's face it – isn't that why you came to MIT in the first place? We are committed to creating an atmosphere where all sisters are encouraged and assisted in maintaining a high level of academic success. We provide academic support to our members by keeping you informed of which sisters are in your classes and in your major. Our chapter's scholarship program includes member-to-member mentoring and tutoring, study groups and workshops on topics such as networking and resume writing. All members of Pi Beta Phi also have the opportunity to apply for the scholarships and fellowships offered through the Pi Beta Phi Foundation, which provided more than \$167,000 last year to Pi Phi's across the nation.



HOUSING

Pi Beta Phi is really excited to get a house, hopefully this year. Our own house manager and a housing committee outside of the chapter are actively scouring Boston and Cambridge to find the perfect house for us! While a house may seem indispensable, Pi Phi's have used this as an opportunity to get together in creative ways, whether it be picnicking outside, seeing a musical in Boston, or relaxing in each others' dorm rooms.

SIGMA KAPPA

HISTORY

Sigma Kappa was founded in 1874 by the first five undergraduate women to enroll at Colby College in Maine. Our founders believed in balanced personal growth: social, spiritual, and intellectual. Since 1988, sisters at Theta Lambda have upheld these beliefs within our close-knit sisterhood and our community. We work to develop a unique sisterhood during our collegiate years and continue to nourish that bond as alumnae. Sigma Kappa brings sisterhood to life.



LEADERSHIP

Sigma Kappas enjoy the unity of a strong sisterhood combined with the opportunity and support to become leaders within our chapter and the MIT community. From the moment they are initiated, members are given a variety of ways in which to become involved in the chapter leadership. Positions range from IM Chair to Chapter President, making it possible to find a position for anyone to enjoy. Sisters are also involved in countless organizations on campus and in the local Boston area; everything from Orientation Leaders and Varsity sports captains to volunteers at Boston Health Care for the Homeless. With such a broad range of involvement and interest, Sigma Kappa has a strong presence both on campus and in the greater Boston community.



PHILANTHROPY

As a national organization, Sigma Kappa philanthropy contributes to Gerontology (the study of aging), focusing on Alzheimer's disease research and programs directed at improving the lives of older citizens; Inherit the Earth; and the Maine Seacoast Mission. This year will be the first year of our National Violet Campaign, through which we will host a fundraising event on campus. Our chapter goes above and beyond our basic responsibilities by hosting late Night, our annual campus-wide talent show. At this year's Late Night alone, we raised over \$2,500 for Alzheimer's disease research. Through Late Night, combined with Lollipop and Rose Sales and the Alzheimer's disease Memory Walk over \$4,700 for the cause. We are also involved with many local volunteering efforts. Throughout the year we participate in a variety of community service events including building toys for underprivileged children, tutoring at a local school, and cleaning up Boston area parks. Our community service and philanthropy program is at its most active level ever and will continue to grow with our chapter's increasing.

I found partners in crime, family that doesn't look a thing like me, best friends that double as my tutors and my distractions, shoulders to cry on (or sleep on in class)... Sigma Kappa.

SISTERHOOD

Sisterhood means something different to each Sigma Kappa. For some, sisterhood means having someone there during easy and tough times. For others, sisterhood embodies the laughter and memories that we will cherish for years to come. Our chapter develops a unique sisterhood through retreats, Friday afternoon cookies and cola, study breaks, holiday parties, semi-formals, and mixers, just to name a few. Through the years, we build bonds and create memories outside of formal events. On weekends it is not uncommon to catch sisters going out to a movie, a party, or dinner together at night, and showing support for their sisters participating in athletic, musical, or other pursuits during the day. Sisters also organize Big-sis/Lil-sis outings, late night trips to Ankara's ice cream next door, or even weekend and holiday trips to a sister's house. Sigma Kappa brings together women from all walks of life. It does not take long to realize that the strength of our sorority lies not in our differences, but in our bond; a bond that demonstrates the pride sisters have in knowing that they are Sigma Kappas.

ACADEMICS

From hosting special review and tutoring sessions to organizing faculty mixers and much needed study breaks, Sigma Kappa's scholarship program concentrates on supporting sisters as they work through the day-to-day challenges of MIT. Sigma Kappa's chapter GPA consistently ranks high on the FSILG honor roll. We are continually improving our scholarship program, and received the academic excellence award from our national organization this year. Sigma Kappa's academic strength also extends beyond the reaches of MIT. Sisters frequently receive interview tips, graduate school advice, internship recommendations, and even job offerings from our alumnae in top financial and consulting firms, pharmaceutical companies, medical schools, and graduate programs. Sigma Kappa is a national organization: being part of it means an instant way to network and meet successful people worldwide.



HOUSING

The Sigma Kappa house is a beautiful historic brownstone in the heart of Kenmore Square. There are 24 spots in the house, so the majority of our sisters live on campus. However, our home features many common spaces including a chapter room, dining room, foyer, lounge, and kitchen, where both in-house sisters and on-campus sisters are found watching movies, working on problem sets, and planning the latest chapter event. Sisters frequently browse through our fourth floor "bible closet", to which past generations of Sigma Kappas have donated their course notes and textbooks. Our chef provides dinner five nights a week with generous leftovers; and breakfast and lunch foods are always available. Within easy walking distance of campus, our elegant yet cozy house is the perfect way to simultaneously experience MIT and Boston, either for an afternoon or all three years.



Finances

AXΩ	New Member (per term)	2nd Year (per term)	3rd Year (per term)	4th Year (per term)
Initiation	\$228 (F)	N/A	N/A	N/A
Badge	\$100 (F)	N/A	N/A	N/A
Parlor	\$125	\$125	\$125	\$125
National	\$0	\$0	\$0	\$0
Local	\$220	\$220	\$220	\$220
Total	\$673 (F) & \$345 (S)	\$345	\$345	\$345
Housing	N/A	\$3,645	\$3,645	\$3,645

AEΦ	New Member (per term)	2nd Year (per term)	3rd Year (per term)	4th Year (per term)
Initiation	\$140 (F)	N/A	N/A	N/A
Badge	\$103 (F)	N/A	N/A	N/A
Parlor	N/A	N/A	N/A	N/A
National	\$30 (F) & \$60 (S)	\$60 (F) & \$80 (S)	\$60 (F) & \$80 (S)	\$60 (F) & \$80 (S)
Local	\$220 (F) & \$200 (S)	\$ 220 (F) & \$200 (S)	\$ 220 (F) & \$200 (S)	\$ 220 (F) & \$200 (S)
Total	\$493 (F) & \$280 (S)	\$280	\$280	\$280
Housing	N/A	N/A	N/A	N/A

AΦ	New Member (per term)	2nd Year (per term)	3rd Year (per term)	4th Year (per term)
Initiation	\$150 (F)	N/A	N/A	N/A
Badge	\$50 (F)	N/A	N/A	N/A
Parlor	\$230	\$180	\$180	\$180
National	\$60	\$60	\$60	\$60
Local	\$85	\$185	\$185	\$185
Total	\$575 (F) & \$375 (S)	\$425	\$425	\$425
Housing	N/A	\$3,970	\$3,970	\$3,970

KAΘ	New Member (per term)	2nd Year (per term)	3rd Year (per term)	4th Year (per term)
Initiation	\$175 (F)	N/A	N/A	N/A
Badge	\$35 (F)	N/A	N/A	N/A
Parlor	\$200 (S)	\$100 (F)	\$0	\$0
National	\$0	\$105 (F)	\$105 (F)	\$105 (F)
Local	\$288.54	\$288.54	\$288.54	\$288.54
Total	\$498.54 (F) & \$488.54 (S)	\$493.54 (F) & \$288.54 (S)	\$393.54 (F) & \$288.54 (S)	\$393.54 (F) & \$288.54 (S)
Housing	N/A	\$3,122	\$3,122	\$3,122

ΠΒΦ	New Member (per term)	2nd Year (per term)	3rd Year (per term)	4th Year (per term)
Initiation	270 (F)	N/A	N/A	N/A
Badge	\$0	N/A	N/A	N/A
Parlor	\$17.50	\$17.50	\$17.50	\$17.50
National	\$50	\$50	\$50	\$50
Local	\$199.50 (F) & \$307 (S)	\$307	\$307	\$332 (F) & \$307 (S)
Total	\$537 (F) & \$374.50 (S)	\$374.50	\$374.50	\$399.50 (F) & \$374.50 (S)
Housing	N/A	N/A	N/A	N/A

ΣΚ	New Member (per term)	2nd Year (per term)	3rd Year (per term)	4th Year (per term)
Initiation	\$160 (F)	N/A	N/A	N/A
Badge	\$42 (F)	N/A	N/A	N/A
Parlor	\$160 (F) & \$85 (S)	\$85	\$85	\$85
National	\$75	\$75	\$75	\$75
Local	\$75 (S)	\$230	\$230	\$230
Total	\$437 (F) & \$210 (S)	\$385	\$385	\$385
Housing	N/A	\$4,000	\$4,000	\$4,000

The PRCs aren't experts on each sorority's finances, so if you have specific questions, make sure to ask the sorority VP Finance for details on payment plans, scholarships, and other finance specifics.

Notes

34% of women at
MIT are Greek.
That's nearly
700 women.



Fraternity and sorority members volunteer approximately 850,000 service hours per year

Notes



All of the sororities at MIT have higher GPAs than the on-campus student population

Notes





The people involved in Greek Organizations are just as if not more **focused, driven, energetic, and committed** to their activities as other students on campus. - Sarika Chandiramani '10

panhel.mit.edu



My sisters rock because they are so incredibly **supportive of who I am** and what I do. Whenever I'm nervous or unsure, they're always there to cheer me on. - Arti Virkud '11



I came to college looking for new friends and experiences. Here in a sorority, I **found a family**.
- Kamyin Chang '10