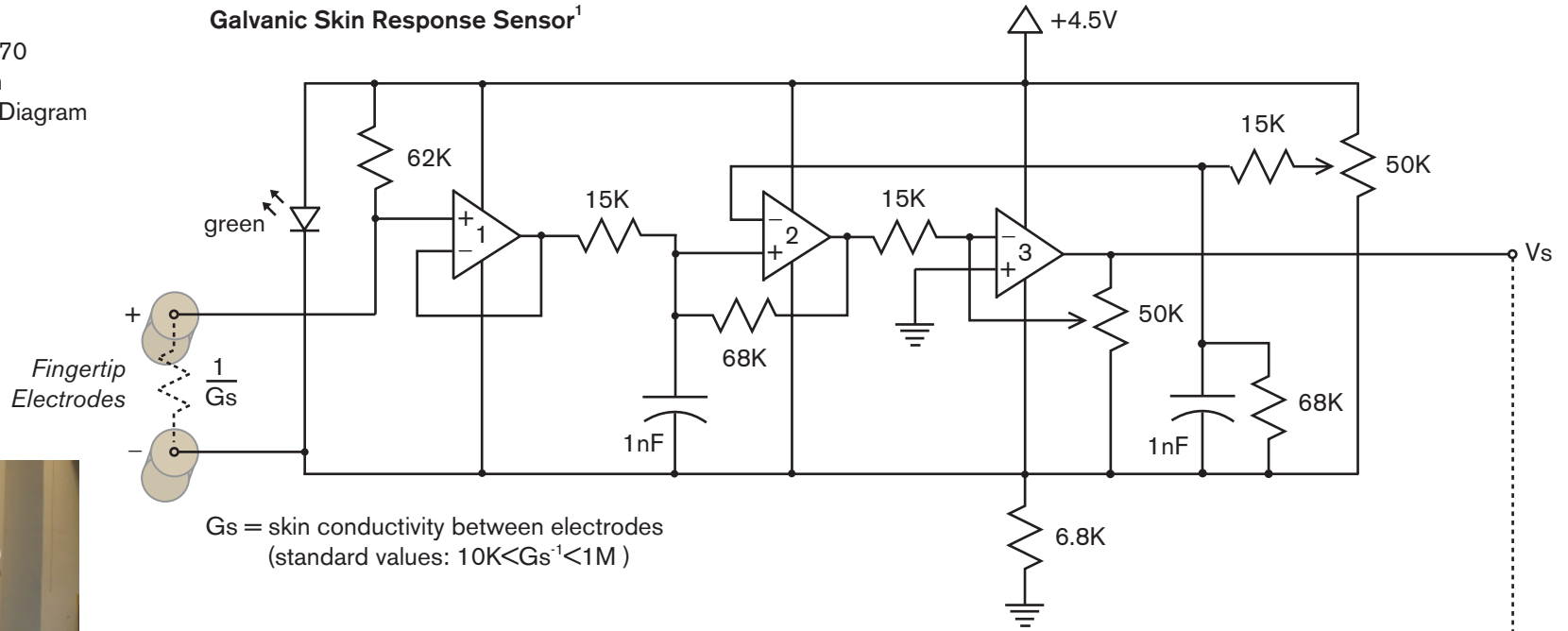
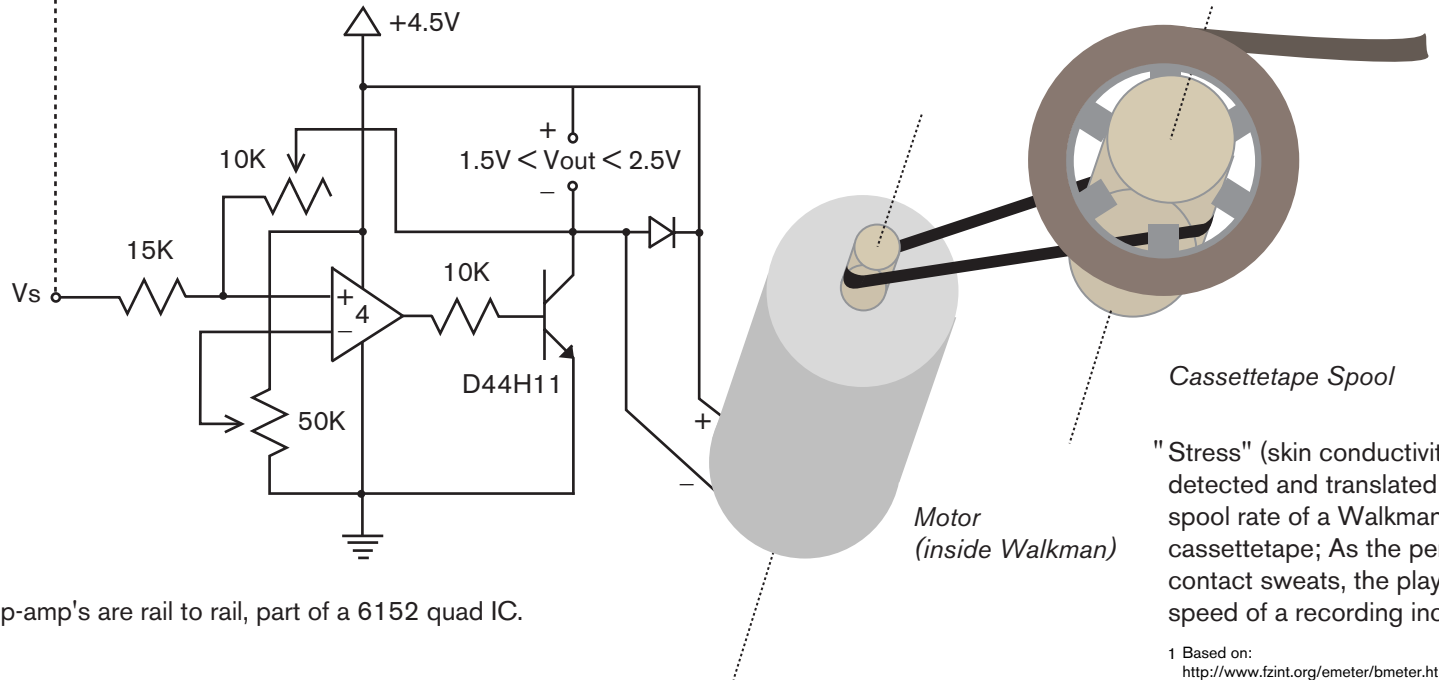


12/2002

Galvanic Skin Response Sensor¹



Walkman Cassettetape Motor Control



All op-amp's are rail to rail, part of a 6152 quad IC.

"Stress" (skin conductivity) is detected and translated to the spool rate of a Walkman cassettape; As the person in contact sweats, the playback speed of a recording increases.

¹ Based on:
<http://www.fzint.org/emeter/bmeter.htm>
 Ralph Hilton, 2000

